



Self-service Terminal TagPad

Who
We
Are

Combining Expertise of

M²DERN EXPO

Equipment design, production & full service installation

 **MINT**

Smart solutions for retail, supply chains & FMCG companies

 **SQUARES**

Retail consulting and concept design

 **ENGINEERING**

Designing and manufacturing production lines as well as stamps, molding tools and rapid tooling

MINT INNOVATIONS

An innovative company created to develop and implement the latest high-tech solutions in Modern-Expo's portfolio

Our main competence is to develop comprehensive smart solutions that transform retail space into stores of the future



Our Experience

15+
years of experience

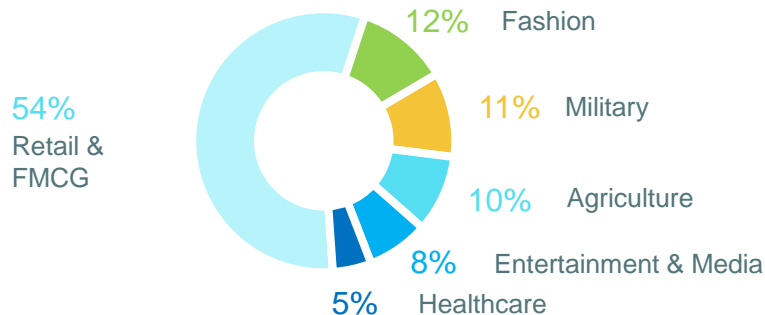
20+
ongoing projects

100+
Experiments

100+
pilot projects in:

- › Retail & FMCG
- › Fashion
- › Military
- › Agriculture
- › Healthcare
- › Entertainment & media

Areas of Expertise



Partners in

Ukraine, Belarus, Poland, Latvia, Germany, Netherlands, Finland, Sweden, France, Denmark, Belgium, UAE, Japan, USA, Canada, Australia

Our Agile Team

70

team members



46

Software
developers

10

Data
scientists

10

Hardware
engineers

4

PhD

We see efficiency as point of differentiation using



Internet
Of Things



Big
Data



Robotics



Computer
Vision

Challenges we successfully overcome

We collect and process valuable data about purchases, customer behaviors and sales. Based on this information we can formulate business processes that allow to:

Control and manage equipment remotely

Carry out merchandising control

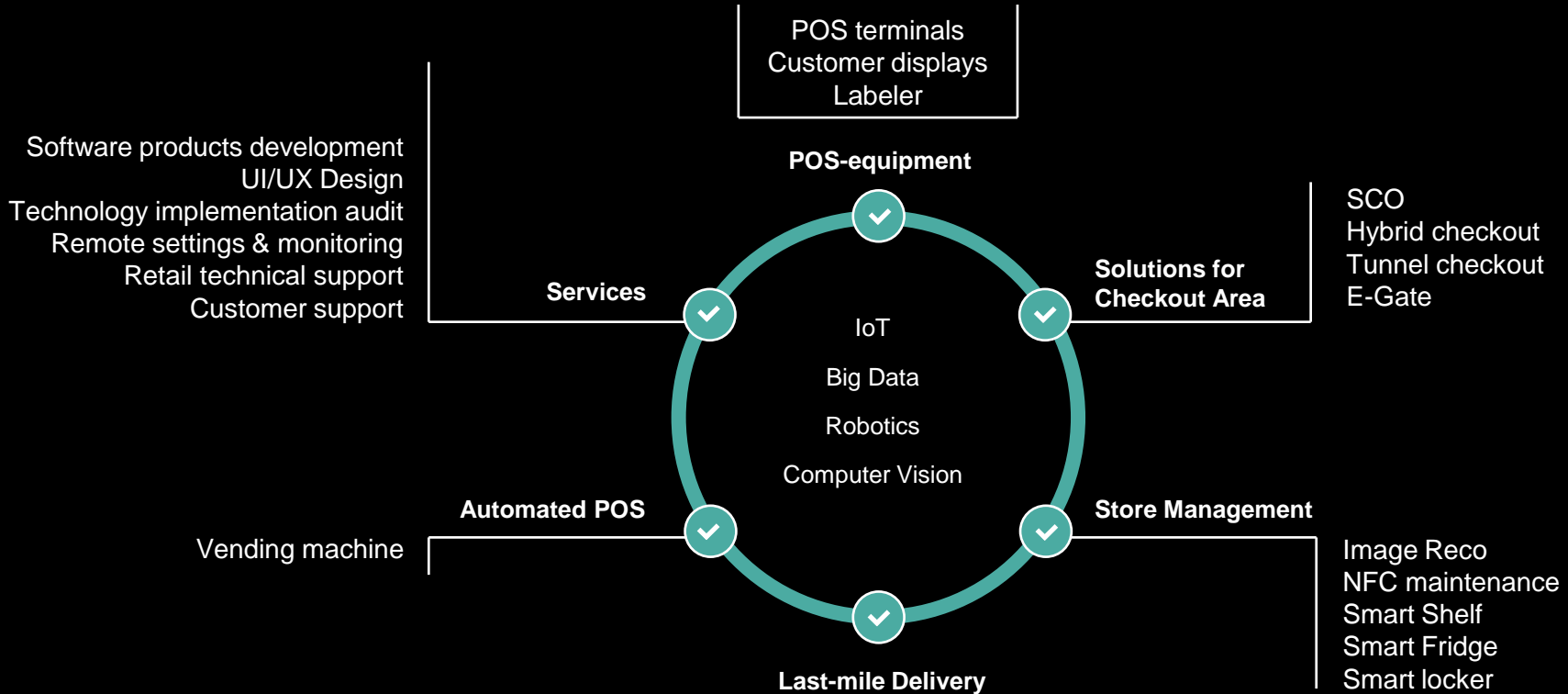
Make sales predictable

Build customer portraits

Analyze and manage client's portfolio

Eliminate out-of-stock

Our Solutions





POS-equipment

POS-terminal

Matrix LED LCD 15.6", 16:9, 1920×1080.

Processor Intel Celeron J1900 2,42 GHz.

Random access memory 4 GB DDR3.

Solid state drive SSD 64GB*

Graphic system Intel HD Graphics

Operating system support Linux, Windows (XP/7/8/10)

Touch screen projected capacitive

The number of points of contact 10 multitouch

Power source: AC 100 ~ 240V. Capacity 65 W max



Interfaces:

- › USB: 1 x USB 3.0; 6 x USB 2.0
- › COM1: RS232/422/485, DB9
- › COM2: RS232, DB9
- › COM3: RS232, RJ50 with convert to DB-9 cable
- › PP USB (24V) 1 port
- › LAN 2 ports
- › VGA 1 port

Advantages:

- › Easy maintenance
- › Intuitive interface
- › Superior security
- › Fast integration
- › Service support

Peripherals:

- › Magnetic stripe reader
- › Customer display
- › Scales
- › Barcode Scanner
- › Check printer

Touch Display

Display LED LCD 15.6 ", 16: 9, 1920×1080,
capacitive touchscreen

Power source: 12-19V -2A min

VGA port – 1 unit

HDMI port – 1 unit

USB port – 1 unit

**Touchscreen customer display — full
color interactive screen**



Functions:

- › Product demonstration
- › Customer questioning
- › Promo

Advantages:

- › Easy maintenance
- › Fast integration
- › Service support

The Issue: Traditional Ways of Marking Products in a Store

Self-service scales – only for fruits and vegetables -> manual search of the product by a cashier



The Issue: Traditional Ways of Marking Products in a Store

Stationary label printers + plus
manual product marking



Self-service Terminal TagPad

Solution that combines touch monitor and label printer. It is perfect for products sold by pieces: own-produced bakery, confectionery and beverages.

operational
POS monitor/
display

software with touch
interface

fiscal printer

PC



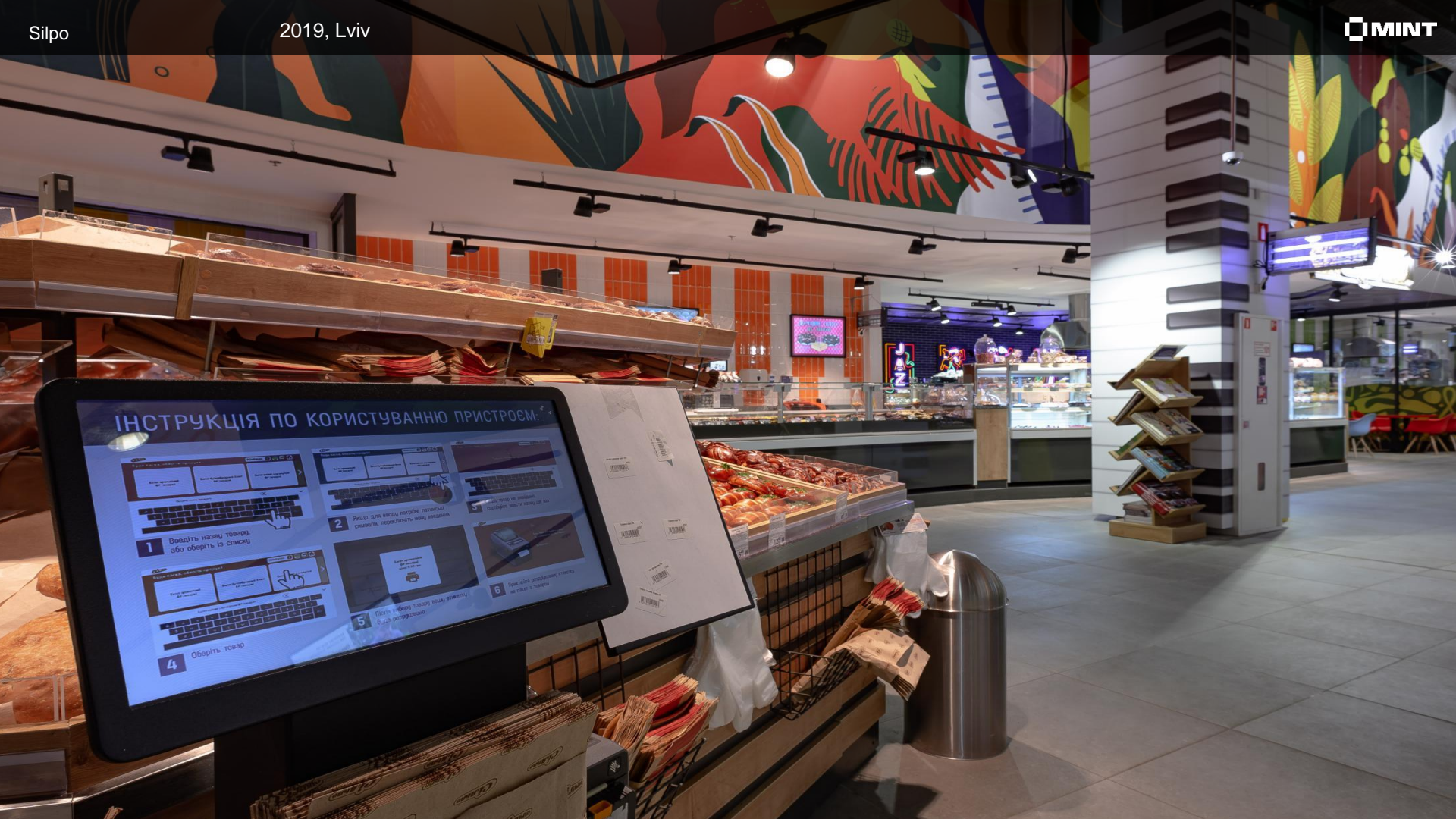
Self-service Terminal TagPad

Benefits:

- › Compact size
- › No additional equipment needed
- › User-friendly interface
- › No involvement of store workers
- › Optimization of stock monitoring
- › Elimination of human mistakes
- › No waiting in lines



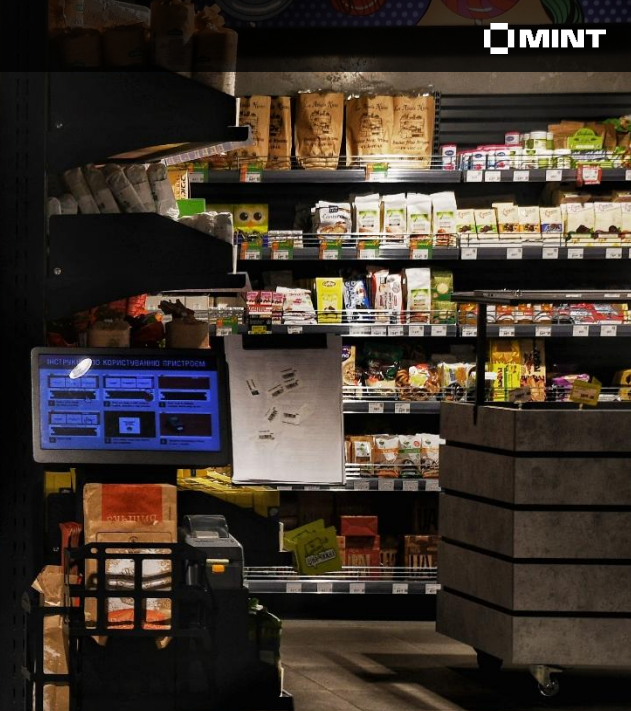
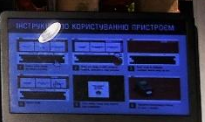




ІНСТРУКЦІЯ ПО КОРИСТУВАННЮ ПРИСТРОМ.

- 1** Введіть назву товару або оберіть із списку
- 2** Натисніть на сканер штрих-коду
- 3** Натисніть на сканер штрих-коду
- 4** Оберіть товар
- 5** Натисніть на сканер штрих-коду
- 6** Товари будуть роздруковані на сканері

ТЕХНОЛОГІЇ
ПРИГОТУВАННЯ





Head Office

Modern-Expo
Lutsk, Ukraine
T +380 (332) 78 95 00
info@modern-expo.com



Mint Innovations

Lutsk, Ukraine
hello@mint-innovations.com
mint-innovations.com

Office in Poland

Lublin, Poland
T +48 (81) 744 50 50
biurohandlowe@modern-expo.pl

Office in Germany

Wiesbaden, Germany
T +49 (0) 30 417 44 603
officeberlin@modern-expo.de

Office in France

Paris, France
T +33 (1) 77 19 38 81
contact@modern-expo.fr

Office in UK

London, UK
T +44 (0) 7534 635 267
T +44 (0) 7534 635 103
uk.sales@modern-expo.com

Office in the Middle East

Dubai, UAE
T +971 (0) 4 557 8311
uae@modern-expo.com

Office in Belarus

Minsk, Belarus
T +375 (17) 370 12 96
by.sales@modern-expo.com

Office in Russia

Moscow, Russia
T +7 (495) 665 34 42
T +7 (495) 665 34 57
moscow@modern-expo.com